



User Manual

Fastlane[®] FastCmd Manual

Setting the Standards

Fastlane[®] is a registered trademark of Integrated Design Limited

Contents

1. Introduction	3
2. Setup	3
3. Troubleshooting	7
4. Technical Support	8

1. Introduction

FastCmd is a **Windows only** application for monitoring and controlling Fastlane products. The app communicates with lanes over a network. The purpose of this manual is to provide sufficient information for suitably qualified personnel to install and setup the FastCmd application.

This manual should be used in conjunction with the appropriate product installation manual and the configuration manual for your Fastlane product.

2. Setup

You do not need to be an expert at networks or computers to set up the application, however, some familiarity is expected.



Prerequisites – What you will need

Item	Description
Windows machine	Running Windows 10 – Connected to your local network You may require system administrator rights – Recommended at least 4GB of RAM
FastCmd Application Files	Available from the Fastlane-Turnstiles Website
Fastlane Product (Lane)	Connected to your machine via a Local Area Network

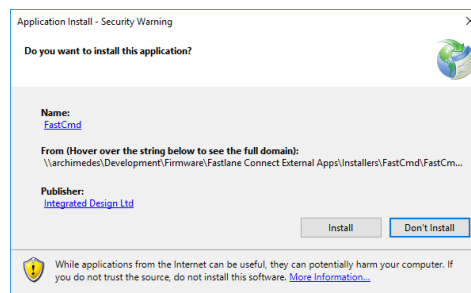
Fastlane products should be installed and configured according to the network diagram in the Fastlane Connect manual. If using a switch, the Lan/wireless network can be replaced by a direct connection to your windows machine. If you have questions regarding setting up your Fastlane product on your network please contact your Fastlane integrator.

2.1. Installation

1. Download the [FastCmd application folder](#) and extract the contents
2. Install and run the application by opening the 'setup.exe' file

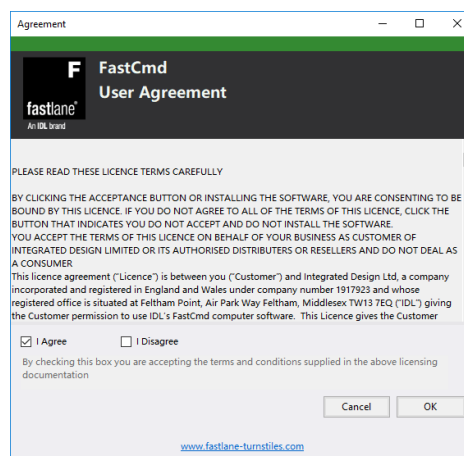
Name	Date modified	Type	Size
Application Files	28/11/2018 11:20	File folder	
FastCmd.application	28/11/2018 11:12	Application Manif...	10 KB
setup.exe	28/11/2018 11:12	Application	776 KB

3. Check that your instance of the application has been verified by Integrated Design Limited.

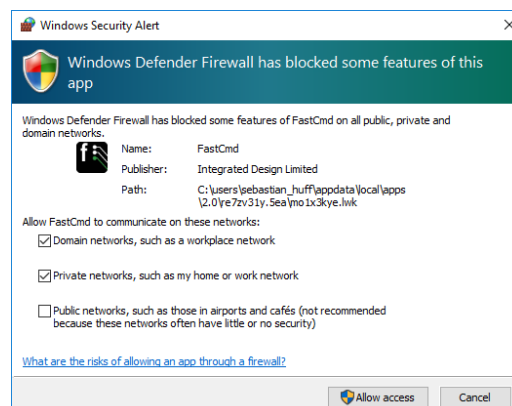


The application will now install and run.

Agree to the terms and conditions to use the application.



When the application opens; Windows may alert you to allow access for the application to communicate on your local area network.

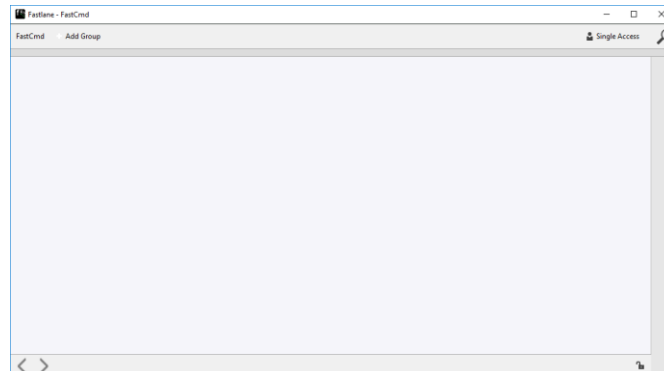


The application needs access to your local area network to communicate with your network connected Fastlane devices. Your system administrator will know if you are on a domain network or a private network, if you are unsure, we recommend allowing FastCmd to communicate on both Domain and private networks by clicking the relevant tick boxes and selecting 'Allow Access'.

You are now ready to set up the application.

2.2. Set up lanes

The application will load as below, start by clicking the Add Group button.



1. Search for lanes on your local network by clicking the icon in the top right hand corner of the screen



Each lane has;

- A network bios **name**
- An **IP address**
- A **MAC address**

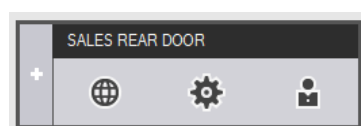
The name and IP address are

Setup your lanes following the instructions from the Fastlane Connect manual. You can easily access the lane's Connect, Config, and Admin pages by clicking the icons on the lane controls.

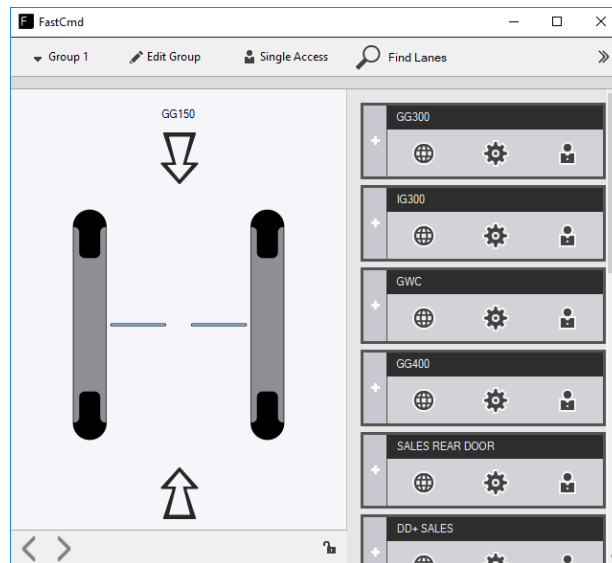
The lanes can be addressed statically or via DHCP. The application will handle IP addresses changing over the lifetime of its service; it finds all lanes on the network and identifies each by its

2.3. Setup Lanes

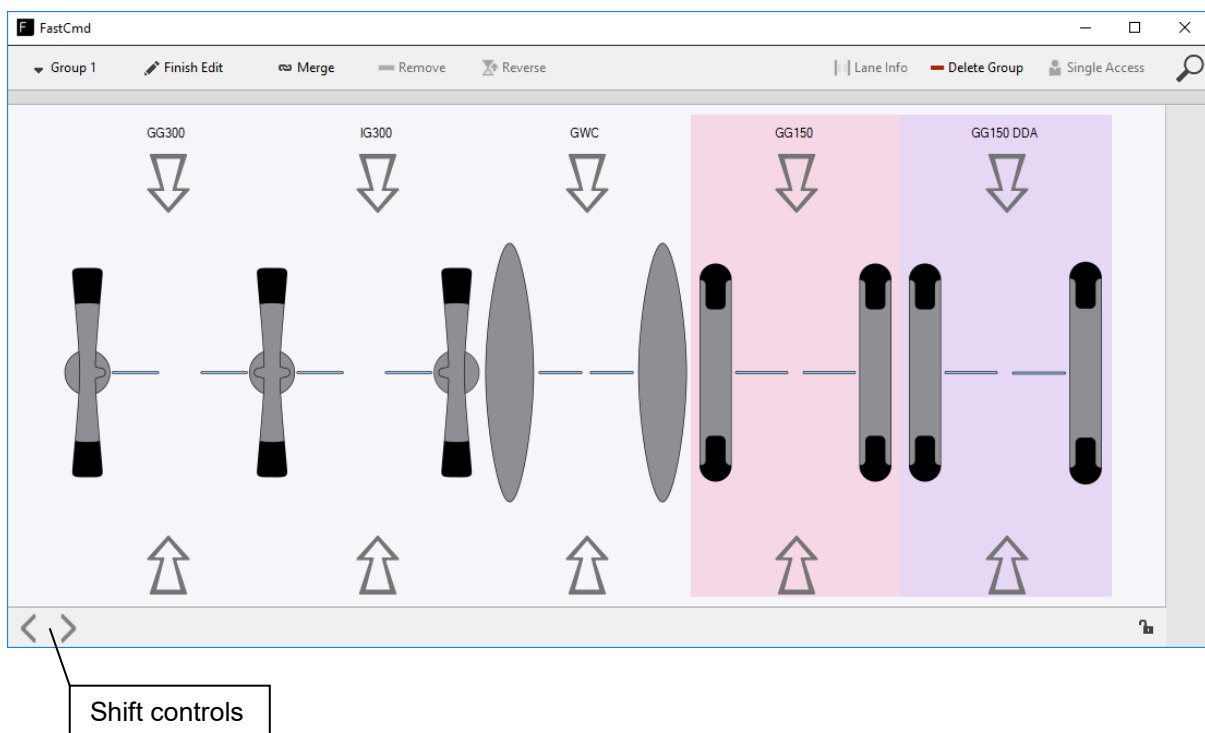
Click the left hand + icon to add the lane for control.



The lane's image will appear in the form, with arrow button controls. Use these controls open the lane, and identify which lane has been added.



Click the 'Edit Group' to allow lane selection for; 'Merge', 'Remove', 'Reverse', and 'Shift' controls. The controls enable and disable based on the lanes that have been selected.



Notice how the GG300 and IG300 lanes have been 'merged' to form an interlane and now share a pedestal.

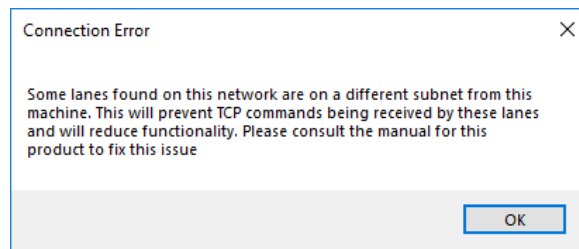
- **Merge / Split** - merge or split two adjacent pedestals of the same type to form an interlane pedestal.
- **Remove** - remove a lane from the form.
- **Reverse** - Reverse the direction the lane is viewed from.
- **Lane Info** - Set the lane's User and Password to authenticate its TCP IP commands, for more information view the Fastlane Connect documentation.
- **Delete Group** - Remove this group from the form.

- **Single / Multiple Access** - Send single or multiple access commands to the lane, for more information read the lane's manual.
- **Shift** - Order lanes or groups of interlanes by clicking the right and left arrows.

You can 'lock' the application by clicking the icon in the bottom right hand corner. Editing the setup now requires a password to be entered. The default password is '**admin**'. If you have changed and forgotten your password please get in contact with IDL support.

3. Troubleshooting

3.1. Lanes are not found



This means that your lanes are on a different subnet to your PC. To fix this issue, you may change the IP address of each lane; this process is described in the Fastlane Connect manual. You can find your Windows device's IPv4 address by opening the command prompt and typing 'ipConfig' followed by return.

If your lanes appear but their names all show as "FASTLANE"; it is likely that the net bios name of the lane has not been set. Users may wish to leave the net bios name unchanged, as performance of the application will not be affected, if you wish to change the names; follow the instructions outlined in the Fastlane Connect manual.

4 Technical Support

We welcome inquiries and comments regarding all of our products. We trust you will find them easy to install and reliable in operation. However, should you experience any application-related difficulties, in the first instance contact your supplier and then, if necessary:

Our direct contact details are:

Fax: UK 0208 890 2444
International +44 208 890 2444
Web: www.fastlane-turnstiles.com
Email: support@idl.co.uk
Tel: UK 0208 844 8536
International +44 208 844 8536

A technical support form may be downloaded from the web site, use this form to provide a description of the reported fault and the corrective action diagnostics information already attempted.

Important Notice

Although every effort has been made to make this manual as accurate as possible, IDL does NOT accept any liability for errors or omissions. The data contained in this manual supersedes any other information published on the Product. IDL further reserve the right to amend or improve the equipment and/or manual without notice.

Version History

Issue	Date	Change	Ref
A0	16/01/2019	First Issue	